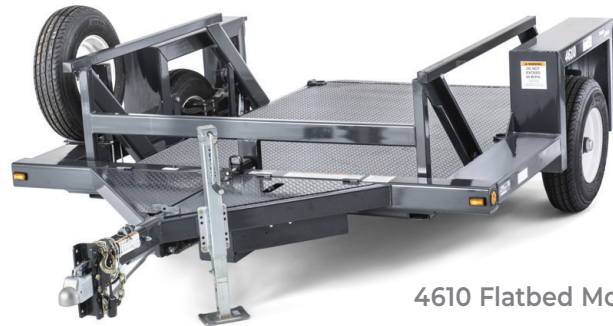




TRIPLE L[®]
TRAILERS



INCREASE PRODUCTIVITY WITH EFFICIENT, SAFER LOADING



4610 Flatbed Model

Load equipment and supplies faster and safer with the Triple L® trailer. Unlike ramp and tilt-bed systems, the Triple L trailer features the exclusive Power Deck system, a unique hydraulic mechanism used to lower the entire deck of the trailer to ground level. This eliminates the need to drive, pull, winch or push a payload up or down a loading ramp, which increases productivity and improves safety. The result is a more efficient solution for loading construction and industrial equipment, machines and supplies.

Even hard-to-load equipment becomes a one-person job with a Triple L flatbed trailer. These models are ideal for carrying equipment with low ground clearance or poor traction such as scissor lifts, industrial sweepers, landscaping equipment, pavers, rollers, compactors and more. With nine models to choose from and capacities up to 10,000 pounds—you'll always find the right solution with a Triple L trailer.



UT914 Utility Model

CONVENIENT LOADING FOR EASE OF TRANSPORT

Triple L utility trailers load as quickly and easily as flatbed models, with the added convenience of enclosed sides. These dual-purpose models are ideal for carrying equipment or supplies. A full width, low angle ramp allows for easier loading with a handcart or dolly. Choose from eight models with capacities up to 10,000 pounds. Optional rails and a tailgate can be added or removed at any time for added convenience.

IMPROVED SAFETY:

- Keeps all loading and unloading at ground level.
- Eliminates chances of dropping cargo off ramps.
- No climbing to access machine tie-downs.
- No heavy, hinged ramps that can come loose or drop.

POWER DECK ADVANTAGE



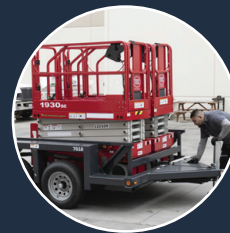
- Single lever hydraulic control
- Keeps all loading and unloading at ground level.
- Eliminates chances of dropping cargo off ramps.
- No climbing to access machine tie-downs.
- No heavy, hinged ramps that can come loose or drop.



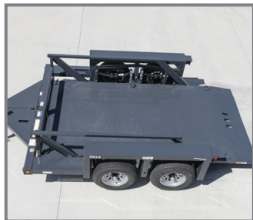
LOWER
entire deck to
ground level.



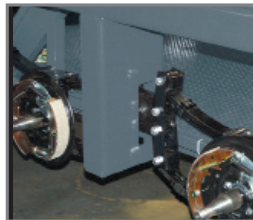
LOAD
equipment



LIFT
to transport
position



Large Deck
Up to 72 inches
wide to hold
more payload.



Quadra Spring Suspension
For smoother
transport.



Low Angle Ramp
For low
clearance loading.



Shielded Tail Lights
Added protection
with improved
visibility.



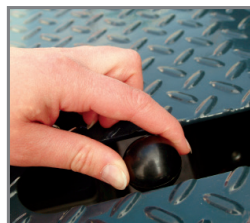
Storage Compartments
Protects
components
and tools; lockable.



Fenderless
No protruding
fenders that
are susceptible
to damage.



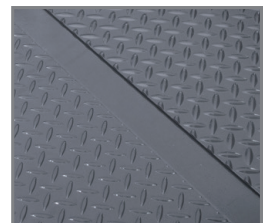
Unhitched Loading
Trailer can be
loaded while
hitched or
freestanding.



Single Lever Control
12-volt hydraulic
system is
proportional in
both directions.



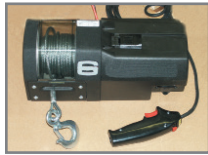
Automatic Deck Latch
Deck automatically
locks upon raising
for added security.



Powder Coating
Provides durable
protective finish.

Triple L® Trailers

OPTIONS & ACCESSORIES



Winch

12-volt loading winch with 12-foot remote control.
Flatbed model



Spare Tire & Bracket

Mounts conveniently within the width of the chassis.



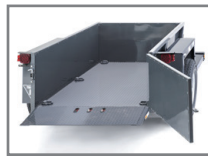
Surge Brakes

Heavy-duty actuator with adjustable coupler.



Extended Side Rails

Bolted to existing rails for 36 in. or 48 in. heights.
UT model only



Tailgate

Full width swinging tailgate can easily be removed.
UT model



Pintle Hitch

Interchanges and replaces standard ball coupler.

FLATBED MODEL	449	4610	7610	7612	7614	7616	1012	1014
Capacity	5,000 lb (2,268 kg)	4,500 lb (2,041 kg)	7,000 lb (3,175 kg)	7,000 lb (3,175 kg)	7,000 lb (3,175 kg)	6,500 lb (2,948 kg)	10,000 lb (4,536 kg)	10,000 lb (4,536 kg)
Deck Width	4' 4 in. (1.32 m)	6 ft (1.83 m)	6 ft (1.83 m)	6 ft (1.83 m)	6 ft (1.83 m)	6 ft (1.83 m)	6 ft (1.83 m)	6 ft (1.83 m)
Deck Length	9 ft (2.74 m)	10 ft (3.05 m)	10 ft (3.05 m)	12 ft (3.66 m)	14 ft (4.27 m)	16 ft (4.88 m)	12 ft (3.66 m)	14 ft (4.27 m)
Overall Length	14 ft (4.27 m)	15 ft (4.57 m)	15 ft (4.57 m)	17 ft (5.18 m)	19 ft (5.79 m)	21 ft (6.4 m)	17 ft (5.18 m)	19 ft (5.79 m)
Trailer Weight*	1,670 lb (758 kg)	2,070 lb (939 kg)	2,500 lb (1,134 kg)	2,690 lb (1,200 kg)	2,930 lb (1,329 kg)	3,150 lb (1,429 kg)	3,010 lb (1,365 kg)	3,210 lb (1,456 kg)
Lift Mechanism	Hydraulic	Hydraulic	Hydraulic	Hydraulic	Hydraulic	Hydraulic	Hydraulic	Hydraulic
Axle	Single	Single	Tandem	Tandem	Tandem	Tandem	Tandem	Tandem
Wheel Size	16 in. (0.41 m)	14.5 in. (0.37 m)	15 in. (0.38 m)	15 in. (0.38 m)	15 in. (0.38 m)	15 in. (0.38 m)	16 in. (0.41 m)	16 in. (0.41 m)
Brakes	Electric	Electric	Electric	Electric	Electric	Electric	Electric	Electric
Hitch — Ball Size	2-5/16 in (.058 m)	2-5/16 in (.058 m)	2-5/16 in (.058 m)	2-5/16 in (.058 m)	2-5/16 in (.058 m)	2-5/16 in (.058 m)	2-5/16 in (.058 m)	2-5/16 in (.058 m)

UTILITY MODEL	UT49	UT410	UT610	UT612	UT614	UT912	UT914
Capacity	5,000 lb* (2,268 kg)	4,500 lb (2,041 kg)	7,000 lb (3,175 kg)	7,000 lb (3,175 kg)	6,500 lb (2,948 kg)	10,000 lb (4,536 kg)	10,000 lb (4,536 kg)
Deck Width	4 ft 4 in. (1.32 m)	6 ft (1.83 m)	6 ft (1.83 m)	6 ft (1.83 m)	6 ft (1.83 m)	6 ft (1.83 m)	6 ft (1.83 m)
Deck Length	9 ft (2.74 m)	10 ft (3.05 m)	10 ft (3.05 m)	12 ft (3.66 m)	14 ft (4.27 m)	12 ft (3.66 m)	14 ft (4.27 m)
Overall Length	14 ft (4.27 m)	15 ft (4.57 m)	15 ft (4.57 m)	17 ft (5.18 m)	19 ft (5.79 m)	17 ft (5.18 m)	19 ft (5.79 m)
Trailer Weight*	1,795 lb (814 kg)	2,220 lb (1,007 kg)	2,650 lb (1,202 kg)	2,850 lb (1,293 kg)	3,050 lb (1,383 kg)	3,170 lb (1,438 kg)	3,370 lb (1,529 kg)
Lift Mechanism	Hydraulic	Hydraulic	Hydraulic	Hydraulic	Hydraulic	Hydraulic	Hydraulic
Axle	Single	Single	Tandem	Tandem	Tandem	Tandem	Tandem
Wheel Size	16 in. (0.41 m)	14.5 in. (0.37 m)	15 in. (0.38 m)	15 in. (0.38 m)	15 in. (0.38 m)	16 in. (0.41 m)	16 in. (0.41 m)
Brakes	Electric	Electric	Electric	Electric	Electric	Electric	Electric
Hitch — Ball Size	2-5/16 in (.058 m)	2-5/16 in (.058 m)	2-5/16 in (.058 m)	2-5/16 in (.058 m)	2-5/16 in (.058 m)	2-5/16 in (.058 m)	2-5/16 in (.058 m)

*Will vary slightly with optional equipment.
Battery included

Triple L Group, LLC

Address: 14323 Fern Ave., Chino, CA 91710

Website: www.TripleL.com

Email Inquiries: sales@triplel.com

Phone #: +1-844-8TRIPLE | +1-844-887-4753